

THE NAMES OF THE TROPE SIGNS -Haftarah melody  
arr. Hazzan Abraham Lubin

מִהַפֶּדֶּי פִּשְׁטָא מוֹנַח זָקַף - קָטוֹן

1



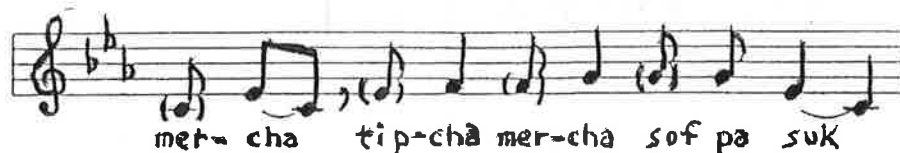
מִרְכָּא טִפְחָא מוֹנַח אֶתְנַחֲתָא

2



מִרְכָּא טִפְחָא מִרְכָּא סוֹף - פְּסוּק :

3



(X)

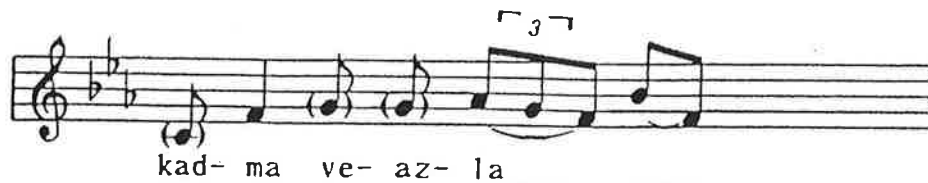
מוֹנַח | מוֹנַח רְבִיעַ

4



קִדְמָא וְאַזְלָא

5



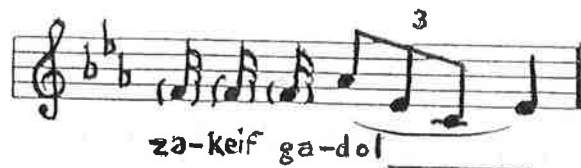
דַּרְגָּא תְּבִיר מֶרְכָּא תְּבִיר

6



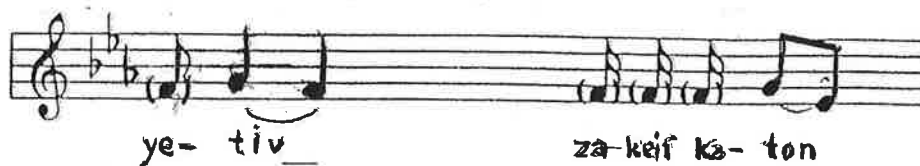
זַקַּף - גְּדוֹל

7



יְתִיב

8



מוֹנַח זִרְקָא מוֹנַח סְגוֹל

9



מוֹנַח פִּזֵּר

10



מוֹנַח תְּלִישָׁא - קִטְנָה

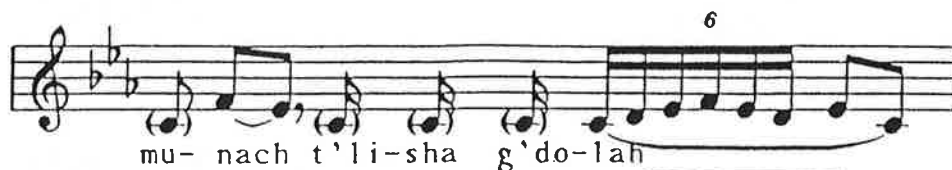
11



accent  
↓

מוֹנַח תְּלִישָׁא - גְּדוֹלָה

12



# גֵּרְשִׁים

13



מִרְכָּא טַפְחָא מִרְכָּא סוֹף - פְּסוּק :


14



## SYMBOLS THAT MAY BE FOUND DOUBLED ON A WORD

The following symbol always fall on the first letter of a word. If the accent of the word is not on it's first syllable then there will be an added symbol to indicate the accent.

In simple terms - whenever you see 2 of these symbols on a word the 2nd one indicates the accent.

Accent  
  
 תְּלִישָׁא - גְּדוּלָּה 5

These symbols always fall on the last letter of the word. If the accent of the word is not on that last syllable, then there will be an extra symbol added to indicate the accent.

In simple terms - whenever you find two symbols on the word the first one indicates the accent.

פִּשְׁטָא 1

זִרְקָא 2

סְגוּלָּה 3

תְּלִישָׁא - קִטְנָה 4

The *Y'tiv* looks just like *Mapach*. It takes the place of *Pashta* and is followed by *Zakef-Katon*. *Yitiv* also falls before the word and the accent is always on the first syllable.

יְתִיב 6